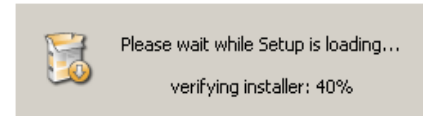
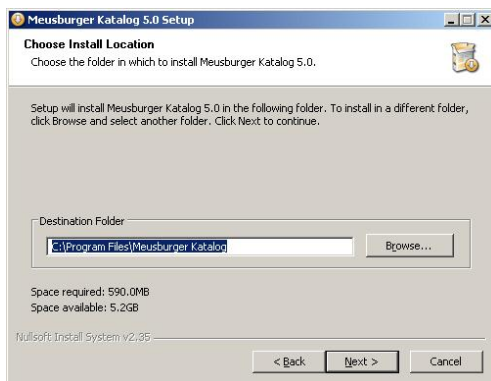


## Installation Instructions of Meusburger CD Catalogue

After inserting the data medium the installation will **automatically** start. If this should not be the case, the installation can also be started by opening the file **KatalogSetup.exe** directly after inserting the data medium.



Then please choose your **language**, confirm with **OK** and launch the installation wizard by pressing **Next >**.



Please specify the storage location for the catalogue on your computer. Please observe: in order to find the stored profiles and orders, the storage location must match those of the old software. We recommend using the default setting. Please confirm with **Next >**.

### DAKO CAD + CADClick:

The DAKO CAD connection as well as the CADClick connection will be installed. Later you can choose in the catalogue menu, which converter you will use.

DAKO CAD: (Direct connection for 3D-CAD see point interfaces)

The new WorldCAT CIF CAD-connection will be installed only.

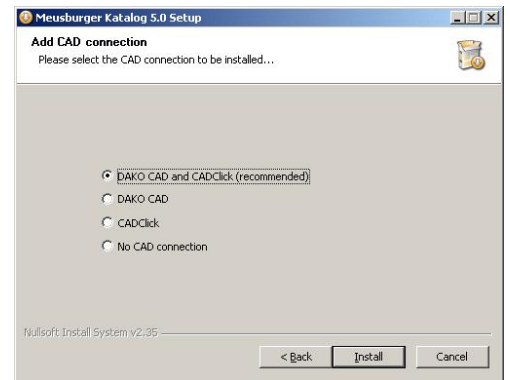
CADClick: (Direct connection for 3D-CAD see point interfaces)

The CADClick (former Modularis) CAD-connection will be installed only.

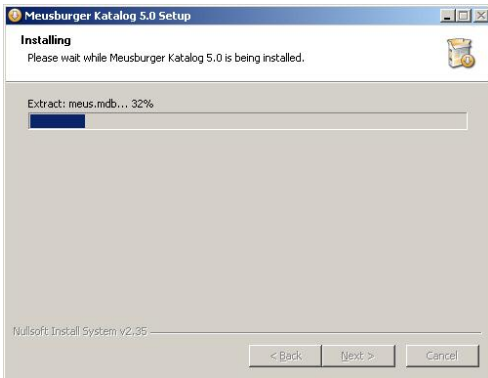
No CAD connection:

The ordering part without CAD connection will be installed only. No CAD files will be created (also no neutral data formats e.g. STEP).

Depending on the CAD application please select the appropriate CAD data connection. This provides the direct transfer of the chosen catalogue CAD data to your CAD system. The default setting (**DAKO CAD<sup>\*1</sup> + CADClick<sup>\*2</sup>**) is recommended since there are settings, which are later used in the catalogue menu, which the converter is set to use. If one of the converters is deselected then it can not be used later without newly reinstalling the software. In case you do not want to produce any CAD data, select **No CAD connection**. Please observe that now no neutral data formats can be produced either.



Continue installation by clicking *Install*.

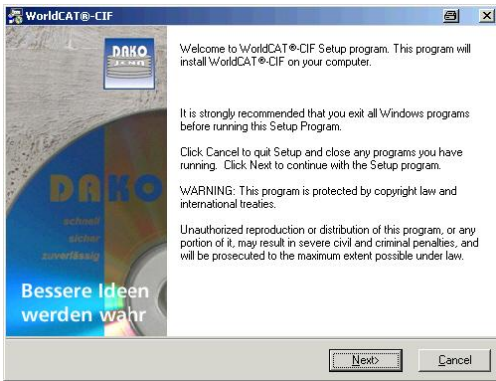


This process takes some minutes.

Please confirm the installation with *Finish*.



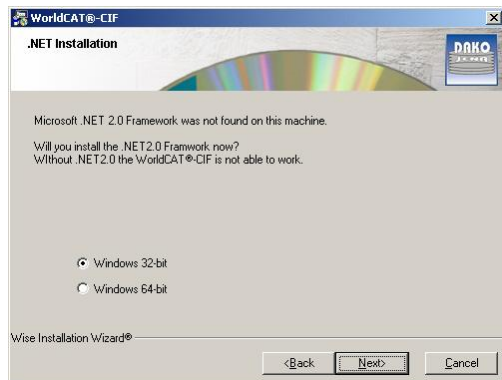
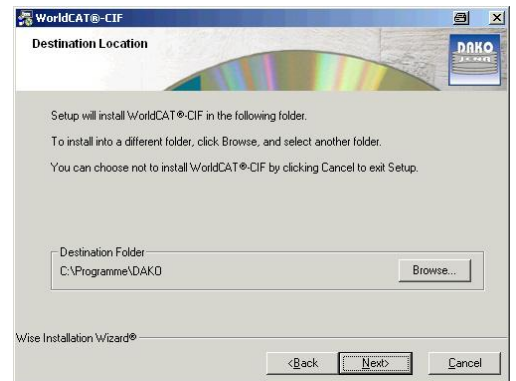
OPTIONAL – WorldCAT-CIF Installation



In case the DAKO Converter (WorldCAT-CIF) software was not installed before this installation will start now.

Start the installation with *Next >*.

Please specify the storage location for this software on your computer. It is recommended to use the default path. Please confirm with *Next >*.



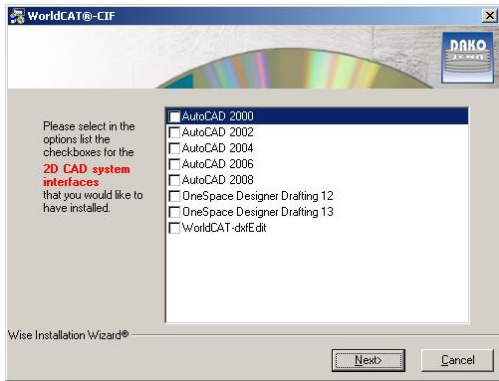
If necessary, **Microsoft .NET Framework** will be installed. This is necessary for the operation of the WorldCAT-CIF.

Please choose your operating system\*\* and confirm with *Next >*.

\*\* Ask your administrator

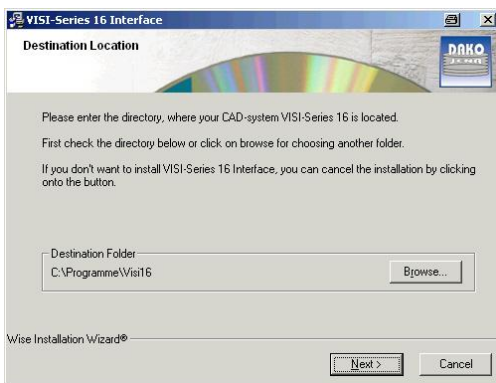
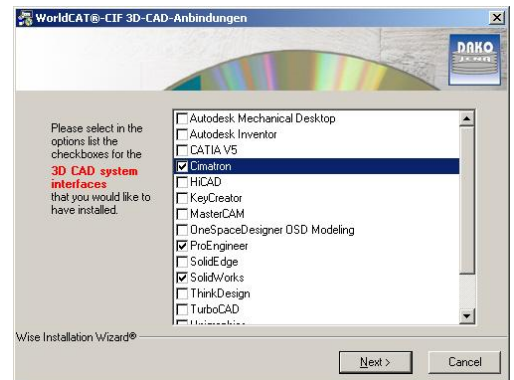
Set a check mark for license agreement please and proceed with *Install*.





Please select now your **2D-CAD-system(s)**. If you do not use a 2D system confirm this by clicking on *Next >*.

Please select now your **3D-CAD-System(s)** and proceed with *Next >*.

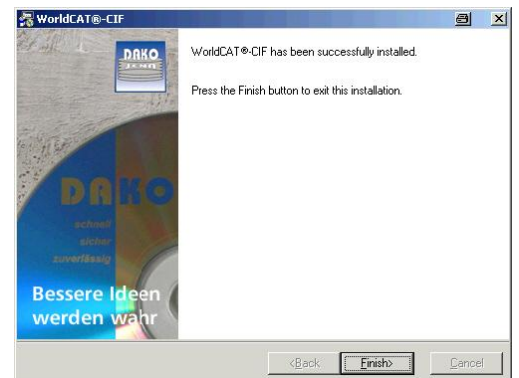


Now enter, if applicable, the corresponding **version** of your CAD system, also thereafter the **installation path** of the CAD application and confirm with *Next >*.


The settings for the **DAKO help window** of the respective CAD system appears. Please read these and if applicable, make the necessary changes to the **settings** in the CAD system, so as to ensure the success of the data transfer with DAKO.

It is possible that your CAD System will be automatically restarted once, for the necessary settings to be applied.

Please finish the installation with *Finish*.



Hints for initial settings in your special CAD system as well as for using WorldCAT-CIF can be found on:

- » the Meusburger Download Website
- » the WorldCAT Website
- » the help function  of WorldCAT-CIF

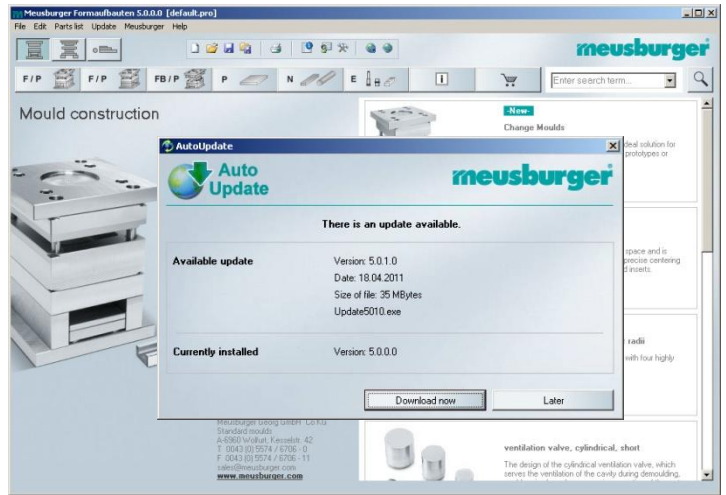
----- END – WorldCAT-CIF Installation -----

## After the installation

Please start the Meusburger catalogue 4.0 from your desktop.

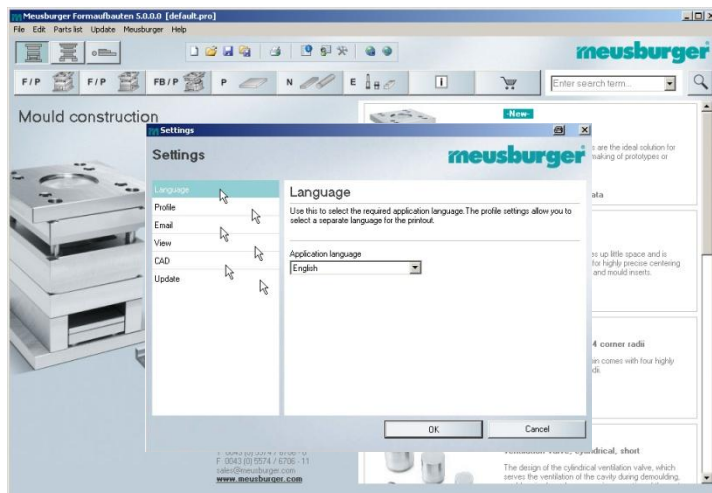
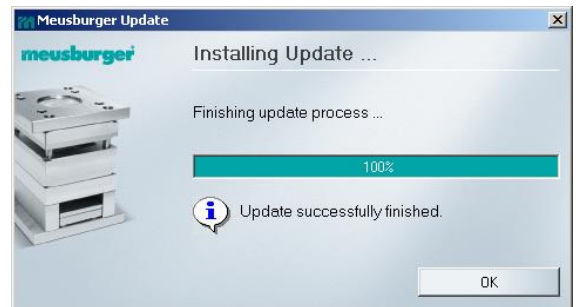
In case your computer is connected to the internet you will automatically be informed by a message box if a new update is available.

Start the download with *Download now*.



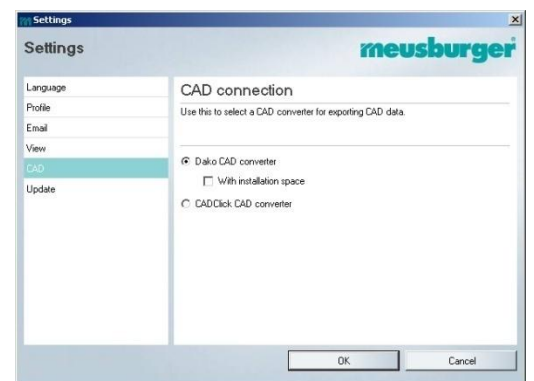
After the download please start the installation by clicking *Start installing*. During this process the software will be automatically closed and restarted after completion.

Please finish the installation of the update with *OK*.



Now you can make your individual settings in the new CD Catalogue Software:

- » *Language*: language of software
- » *Profile*: administrative profiles
- » *Email*: email settings
- » *View*: change of BOM view



- » *CAD*: CAD Converter setting (Attention: default is DAKO)
- » *Update*: turn off automatic update function if no internet connection exists

### System requirements

- » Runs in all common Windows® systems (2000, XP, Vista, Windows 7, 32/64 bit)
- » At least 770 MB hard disk available for installation
- » Internet connection (optional)
- » Adobe® Reader®
- » Printer

### CAD Interfaces of CadClick and DAKO (04/2011)

<b>Neutral Data:</b>	<b>DAKO</b>	<b>CadClick</b>
STEP, SAT, DWG, DXF, IGES, STL		x
<b>CAD – Direct Interfaces:</b>		
Autodesk AutoCAD		x
Autodesk Mechanical	x	x
Autodesk Inventor	x	x
CADdy		x
Catia	x	x
Cimatron	x	
HiCAD	x	
KeyCreator	x	
Mastercam	x	
MegaCAD		x
Creo Elements/Direct (CoCreate)	x	x
Pictures By PC	x	
Creo Elements/Pro (Pro Engineer)	x	x
SolidEdge	x	x
SolidWorks	x	x
ThinkDesign	x	
TopSolid/ Missler	x	x
TurboCAD	x	x
Siemens NX	x	
Visi/ Vero	x	

Do not hesitate to contact us in case of further questions.

### Meusburger Georg GmbH & Co KG

Formaufbauten

Kesselstraße 42

A-6960 Wolfurt

T 00 43 (0) 55 74 / 67 06-0

F 00 43 (0) 55 74 / 67 06-11

[support@meusburger.com](mailto:support@meusburger.com)

[www.meusburger.com](http://www.meusburger.com)